

**G**ENNIUS

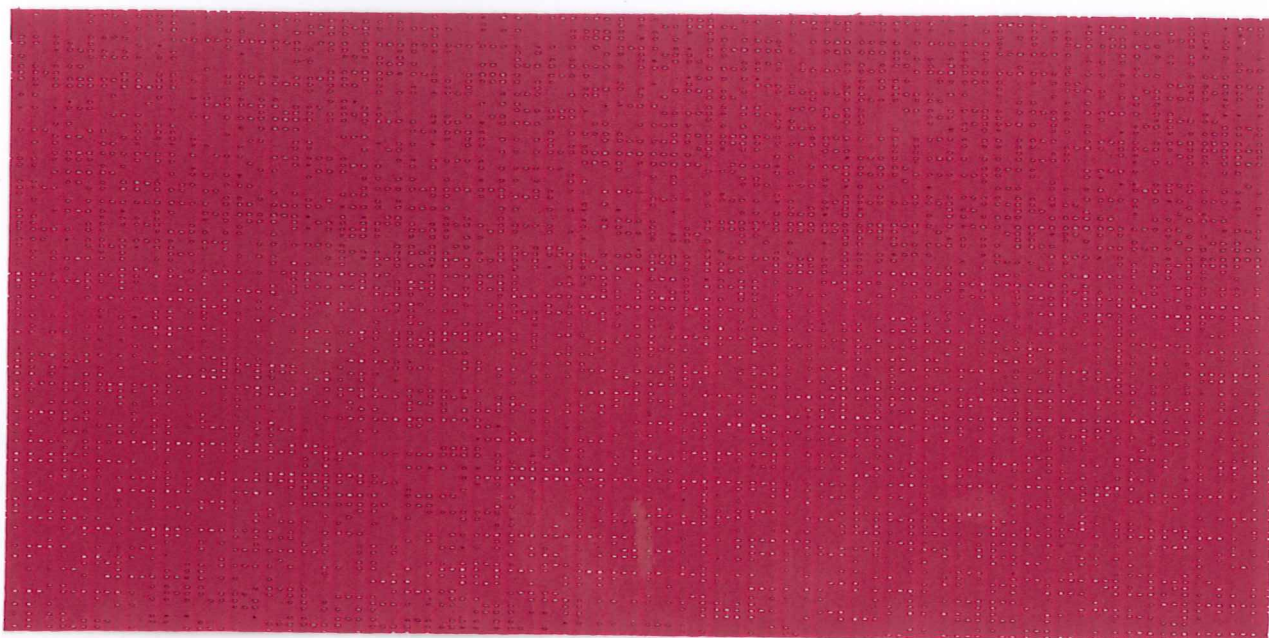
**G**ENNIUS  
SOLTIS  
92

ENJOY  
THE  
OUT  
DOOR  
**KE**  
PROTEZIONI SOLARI

# GENNIUS

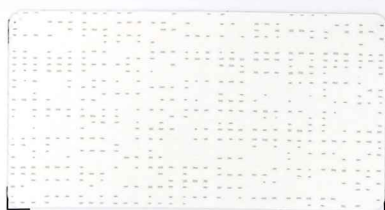
## SOLTIS

92



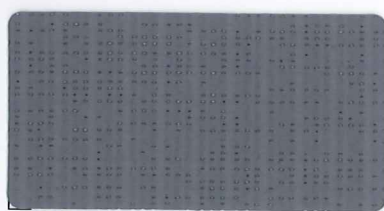
Melograno

NF 92-50268



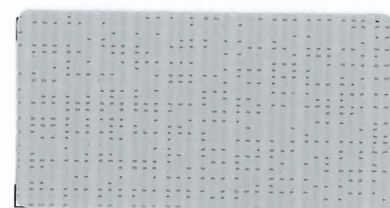
Bianco

NF 92-2044



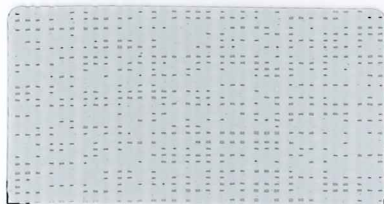
Grigio canna di fucile

NF 92-2167



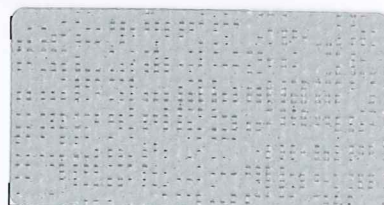
Grigio pietra

NF 92-2171



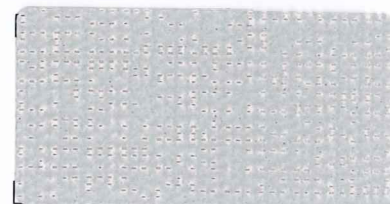
Grigio nuvola

NF 92-50272



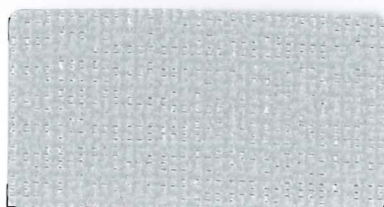
Alluminio/Alluminio

NF 92-2048



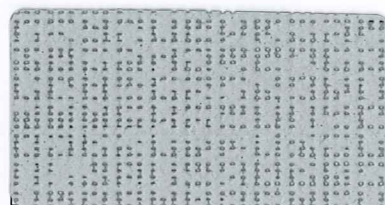
Alluminio/Greggio

NF 92-2046



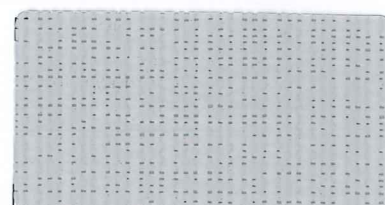
Alluminio/Bianco

NF 92-2051



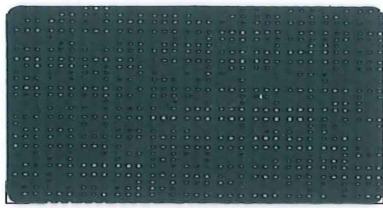
Alluminio/Grigio medio

NF 92-2074



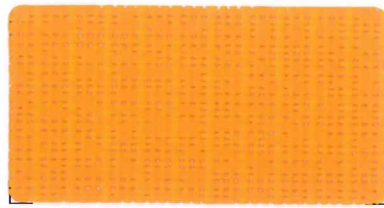
Grigio iridescente

NF 92-2065



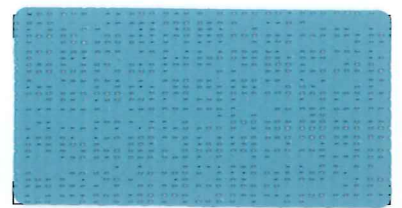
Verde pino

NF 92-2039



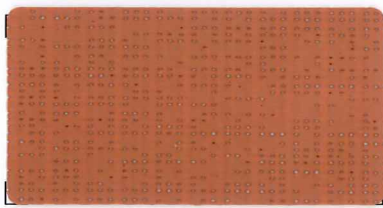
Arancione

NF 92-8204



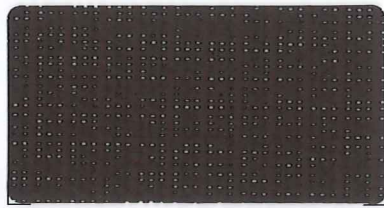
Hawaii

NF 92-50269



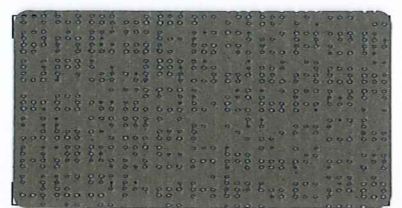
Caramello

NF 92-50261



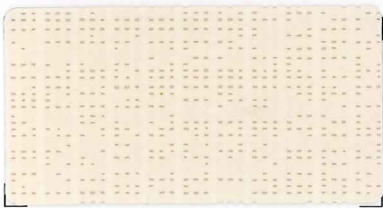
Noce

NF 92-2137



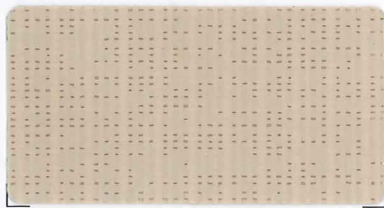
Bronzo

NF 92-2043



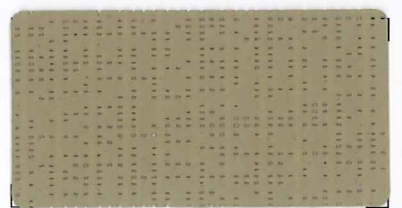
Champagne

NF 92-2175



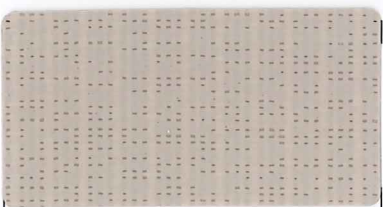
Canapa

NF 92-50265



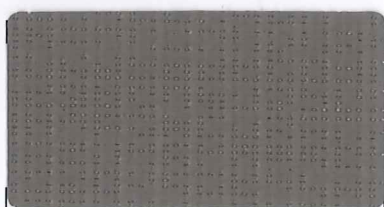
Nocciola

NF 92-2012



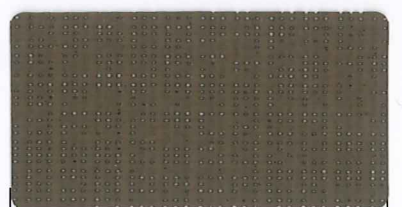
Sabbia

NF 92-2135



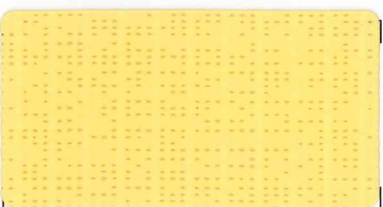
Avana

NF 92-50266



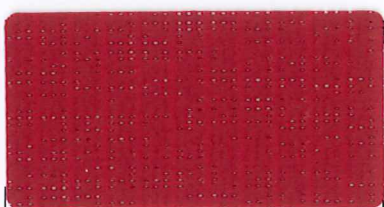
Cacao

NF 92-2148



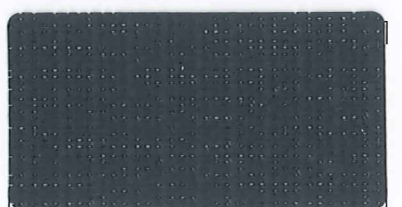
Pulcino

NF 92-2013



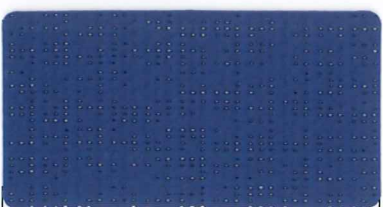
Rosso

NF 92-8255



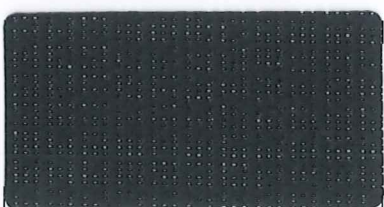
Antracite

NF 92-2047



Blu notte

NF 92-2161



Nero

NF 92-2053



Metallo martellato

NF 92-2045

# Proprietà solari e luce

## Solar and light properties (EN 14501)

	Cod. colore	TS	RS	AS	TV n-h	TV n-n	$g_{ext}^e$	$g_{ext}^i$	Notazione NCS
	92-2012	7	30	63	6	5	0.08	0.46	S 4010 Y 30 R
	92-2013	18	57	25	16	4	0.14	0.38	S 0540 Y 10 R
	92-2039	3	8	89	3	3	0.07	0.53	S 8010 B 90 G
	92-2043	2	12	86	2	3	0.06	0.52	-
	92-2044	20	70	10	19	5	0.14	0.34	S 0500 N
	92-2045	3	35	62	3	3	0.05	0.45	-
	92-2046 A	9	48	43	8	3	0.08	0.41	-
	92-2046 B	9	63	28	8	3	0.07	0.36	-
	92-2047	5	8	87	5	4	0.08	0.53	-
	92-2048	8	46	46	8	3	0.08	0.41	-
	92-2051 A	10	50	40	10	3	0.09	0.40	-
	92-2051 B	9	70	21	9	3	0.07	0.34	-
	92-2053	3	6	91	3	3	0.07	0.54	S 8500 N
	92-2065	10	46	44	7	4	0.09	0.41	-
	92-2074 A	4	38	58	4	3	0.06	0.44	-
	92-2074 B	4	25	71	4	3	0.07	0.48	-
	92-2135	9	46	45	6	4	0.08	0.41	S 2005 Y 50 R
	92-2137	3	8	89	3	3	0.07	0.53	S 8010 Y 50 R
	92-2148	3	14	83	3	3	0.06	0.51	S 7010 Y 30 R
	92-2161	5	19	76	3	3	0.07	0.49	S 5040 R 80 B
	92-2167	3	19	78	3	3	0.06	0.50	S 6005 R 80 B
	92-2171	8	43	49	6	4	0.08	0.42	S 2502 B
	92-2175	19	64	17	16	3	0.13	0.36	S 0505 Y 20 R
	92-8204	17	47	36	8	2	0.13	0.41	S 0585 Y 40 R
	92-8255	12	28	60	4	3	0.11	0.47	S 1580 Y 90 R
	92-50261	15	40	45	6	5	0.12	0.43	S 3050 Y 60 R
	92-50265	9	49	42	6	3	0.08	0.40	S 2010 Y 20 R
	92-50266	4	19	77	4	3	0.07	0.50	S 6005 Y 50 R
	92-50268	16	37	47	5	4	0.13	0.44	S 2065 R 10 B
	92-50269	9	35	56	5	3	0.09	0.45	S 2050 B 40 G
	92-50272	12	56	32	9	3	0.10	0.38	S 1502 B

**TS:** Trasmissione solare in %  
 TS: Solar Transmission as a %  
**RS:** Riflessione solare in %  
 RS: Solar Reflection as a %  
**AS:** Assorbimento solare in %  
 AS: Solar Absorption as a %  
**TS + RS + AS = 100 % dell'energia incidente**  
 TS + RS + AS = 100 % of the incident energy  
 $g_{ext}^e$ : Fattore solare esterno  
 $g_{ext}^e$ : External solar factor  
 $g_{ext}^i$ : Fattore solare interno  
 $g_{ext}^i$ : Internal solar factor  
 Vetro tipo "C": doppi vetri isolanti basso emissivi lato 3 (4 + 16 + 4; riempimento Argon - g=0,59 - U=1,2)  
 C type glazing: insulating slightly emissive double glazing in position 3 (4 + 16 + 4; Argon filled - g=0,59 - U=1,2)

**TV n-h:** Trasmissione luce Visibile normale - emisferico in %  
 TV n-h: Normal - hemispherical visible light as a %  
**TV n-n:** Trasmissione luce Visibile normale - normale in %  
 TV n-n: Normal - normal visible light as a %

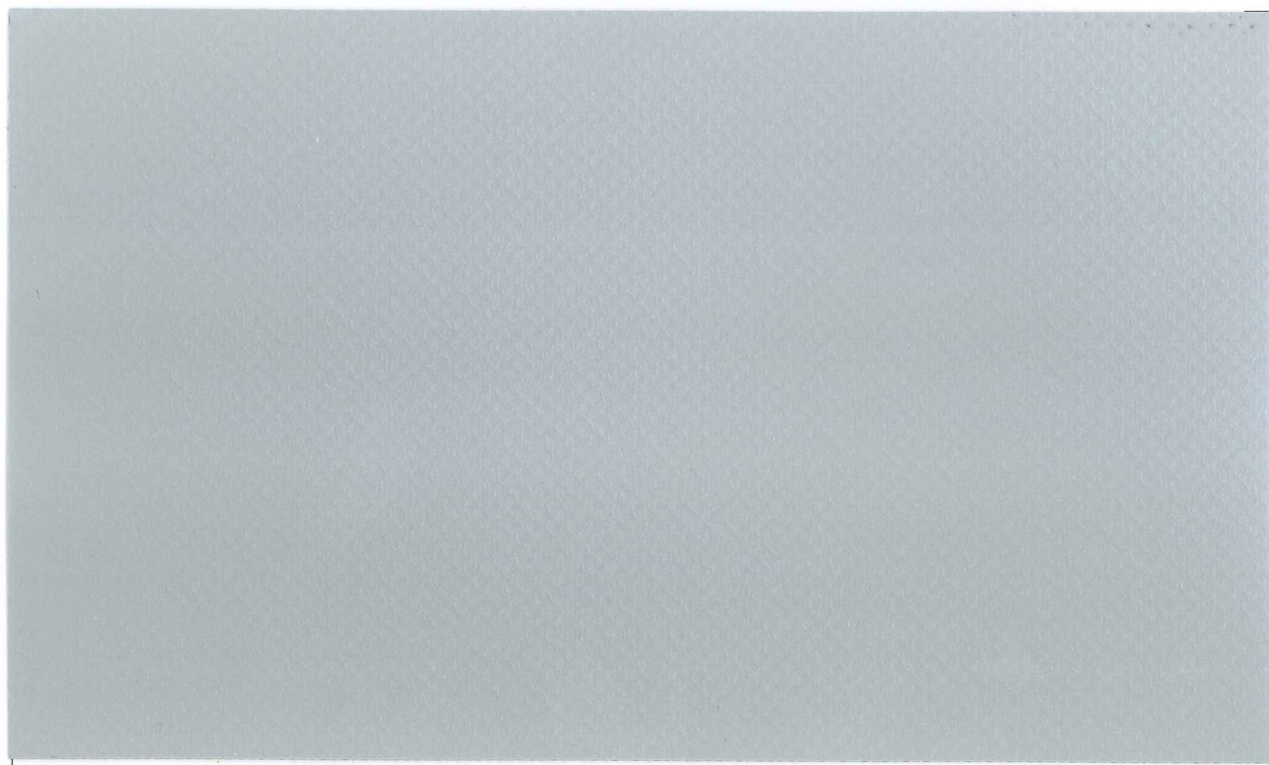
**A:** Lato alluminio esposto al sole  
 A: Aluminium side exposed to the sun  
**B:** Lato colorato esposto al sole  
 B: Colored exposed to the sun

**• Il marchio "NF Toiles" garantisce un livello di qualità elevato ed omogeneo del Soltis 92.**  
**"NF Toiles" mark guarantees a high and homogeneous level of quality of Soltis 92.**

# SOLTIS

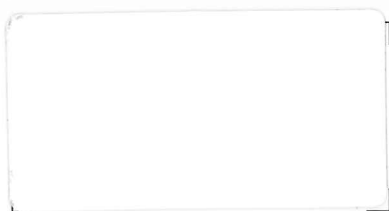
## 92

Proprietà tecniche / Technical properties	Soltis 92	Nome
Peso / Weight	420 g/m <sup>2</sup>	EN ISO 2286-2
Spessore / Thickness	0.45 mm	
Altezza / Width	177 cm	
Lunghezza dei rotoli / Rolls length		
Formato standard in altezza 177 cm / Roll width	50 ml / 50lm	
Proprietà fisiche / Physical properties		
Resistenza alla rottura (ordito/trama) / Tensile strength (ward/welft)	310/210 daN/5 cm	EN ISO 1421
Resistenza allo strappo (ordito/trama) / Tear resistance (ward/welft)	45/20 daN	DIN 53363
Trattamento fungistatico / Fungistatic treatment	Grado 0, eccellente / Degree 0, excellent	EN ISO 846°
Reazione al fuoco / Flame retardancy		
Classe / Rating	B1/DIN 4102-1 • BS 7837 • BS 5867 • Schwerbrennbar-Q1-Tr1/ ONORM A 3800-1 Classe 1/UNI 9177-87 • M1/UNE 23.727-90 VKF 5.2/SN 198898 • 1530.3/AS/NZS G1/GOST 30244-94 Method 1/NFPA 701 • CSFM T19 • Class A/ASTM E84	
Euroclass	B-s2,d0/EN 13501-1	



Grigio cangiante

502-1499



Bianco

502-8102



Champagne

502-8341



Oro

502-2145



Botton d'Oro

502-2166



Papavero

502-8255



Anice

502-2157



Grigio Canna Fucile

502-2167



Alluminio

502-2168

Proprietà tecniche / Technical properties	Prècontraint 502	Nome
Peso / Weight	590 g/m <sup>2</sup>	EN ISO 2286-2
Spessore / Thickness	0,46 mm	
Altezza / Width	180 cm	
Proprietà fisiche / Physical properties		
Resistenza alla rottura (ordito/trama) / Tensile strength (ward/welft)	250/250 daN/5 cm	EN ISO 1421
Resistenza allo strappo (ordito/trama) / Tear resistance (ward/welft)	25/20 daN	DIN 53.363
Trattamento fungistatico / Fungistatic treatment		NF EN ISO 846
Reazione al fuoco / Flame retardancy		
Classificazione / Classification	B1/DIN 4102-1 Schwerbrennbar- Q1-Tr1/ONORM A 3800-1 Class 1/UNI 9177-87 VKF 5.3/SN 198898 BS 7837 Method 1/NFPA 701	

Euroclass

B-s2,d0/EN 13501-1

## Proprietà solari e luce Solar and light properties (EN 14501)

Cod. colore	TS	RS	AS
502-1499	4	48	48
502-8102	10	76	14
502-8341	10	68	22
502-2145	7	57	36
502-2166	12	56	32
502-8255	20	37	43
502-2157	8	47	45
502-2167	2	29	69
502-2168	1	43	56

TS: Trasmissione solare in %  
TS: Solar transmission %  
RS: Riflessione solare in %  
RS: Solar Reflection as a %  
AS: Assorbimento solare in %  
AS: Solar Absorption as a %  
TS+RS+AS=100% dell'energia solare  
TS+RS+AS=100% of the solar energy



**G**ENNIUS

**STAM**

6002 OSCURANTE/BLACKOUT

**STAM**

6002

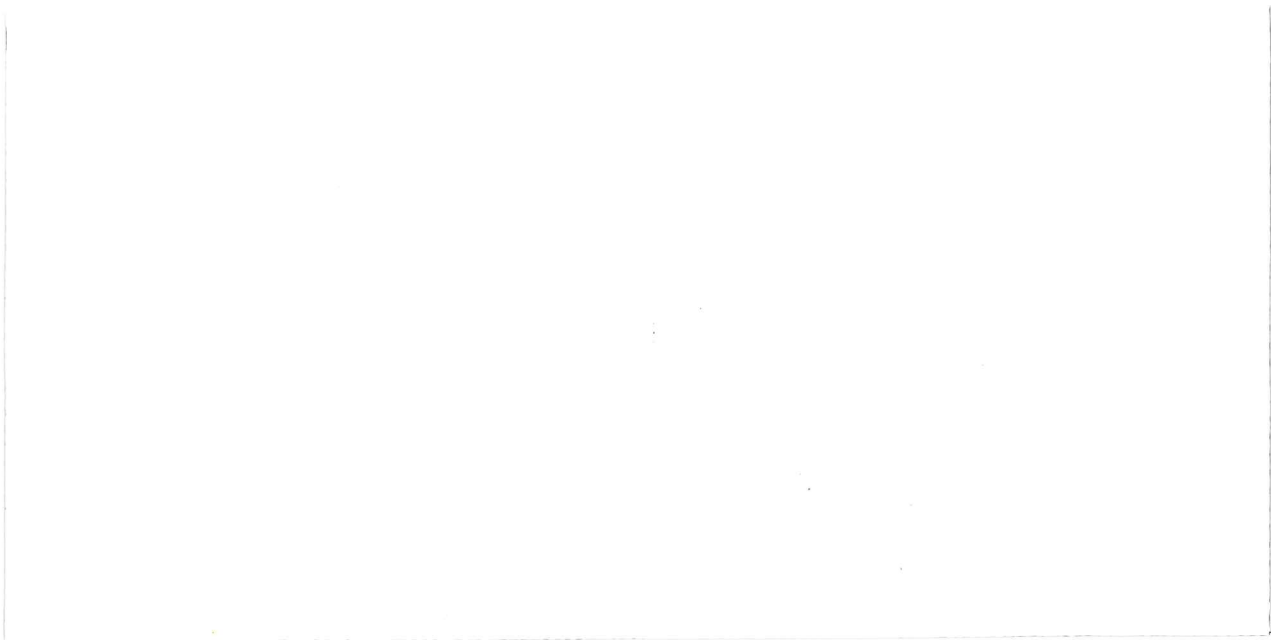
ENJOY  
THE  
OUT  
DOOR  
**KE**

PROTEZIONI SOLARI

# GENNIUS STAM



6002 OSCURANTE/BLACKOUT



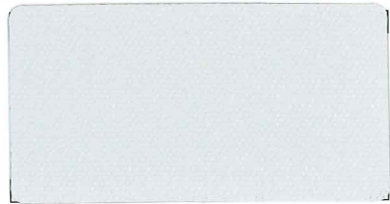
Bianco

6002-20213



Avorio

6002-20211



Grigio

6002-20209

# GENNIUS STAM 6002

OPTIONAL



6002-20183



6002-10387



6002-20201



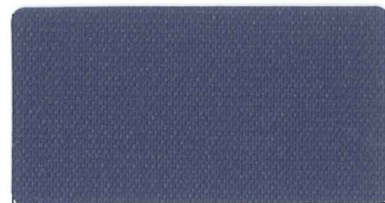
6002-20191



6002-20165



6002-20184



6002-20189



6002-20001



6002-20024



6002-20205

# STAM

6002 OSCURANTE/BLACKOUT

Proprietà tecniche / Technical properties	Stam 6002 oscurante/blackout	Nome
Peso / Weight	730 g/m <sup>2</sup>	EN ISO 2286-2
Filato / Yarn	550/1100 dtex PES HT	
Altezza / Width	260 cm	
Proprietà fisiche / Physical properties		
Resistenza alla rottura (ordito/trama) / Tensile strength (ward/welft)	250/250 daN/5 cm	EN ISO 1421
Resistenza allo strappo (ordito/trama) / Tear resistance (ward/welft)	20/20 daN	DIN 53.363
Adesione / Adhesion	8/8 daN/5cm	EN ISO 2411
Reazione al fuoco / Flame retardancy		
Classificazione / Classification	M2/NFP 92-507 • B1/DIN 4102-1	
Euroclass	B-s2,d0/EN 13501-1	

# STAM

6002

Proprietà tecniche / Technical properties	Stam 6002	Nome
Peso / Weight	630 g/m <sup>2</sup>	EN ISO 2286-2
Filato / Yarn	550/1100 dtex PES HT	
Altezza / Width	260 cm	
Proprietà fisiche / Physical properties		
Resistenza alla rottura (ordito/trama) / Tensile strength (ward/welft)	250/250 daN/5 cm	EN ISO 1421
Resistenza allo strappo (ordito/trama) / Tear resistance (ward/welft)	20/20 daN	DIN 53.363
Adesione / Adhesion	8/8 daN/5cm	EN ISO 2411
Reazione al fuoco / Flame retardancy		
Classificazione / Classification	M2/NFP 92-507 • B1/DIN 4102-1 • Classe 2/UNI 9177 VKF 5.2/SN 198898 • BS 7837 • 1530.3/AS/NZS Method 2/NFPA 701 • Class A/ASTM E 84 • CSFM T19 CAN ULCS 109	
Euroclass	B-s2,d0/EN 13501-1	

# GENNIUS

**PRECONTRAIT**  
**602**

ENJOY  
THE  
OUT  
DOOR  
**KE**  
PROTEZIONI SOLARI

# GENNIUS

*PRECONTRAIT*  
**602**

Bianco

602-8100



Avorio

602-8341L

# GENNIUS

PRECONTRAIN

## 602

OSCURANTE OPACO

BLACKOUT MATTE



Bianco

602-50537



Avorio

602-50539



Grigio

602-50542

OPTIONAL

**PRECONTRAI**  
**602**

Proprietà tecniche / Technical properties	Preconstraint 602	Nome
Peso / Weight	650 g/m <sup>2</sup>	EN ISO 2286-2
Altezza / Width	267 cm	
<b>Proprietà fisiche / Physical properties</b>		
Resistenza alla rottura (ordito/trama) / Tensile strength (ward/welft)	250/250 daN/5 cm	EN ISO 1421
Resistenza allo strappo (ordito/trama) / Tear resistance (ward/welft)	20/20 daN	DIN 53.363
<b>Classe / Rating</b>		
	M2/NFP 90-507 • B1/DIN 4102- 1 • M2/UNE 23.727-90 BS 7837 • Q1-Tr1/ONORM A 3800-1 • 1530.2et3/AS/NZS	

**PRECONTRAI**  
**602** OSCURANTE OPACO  
BLACKOUT MATTE

Proprietà tecniche / Technical properties	Preconstraint 602 Blockout matte	Nome
Peso / Weight	750 g/m <sup>2</sup>	EN ISO 2286-2
Spessore / Thickness	0.62 mm	
Altezza / Width	250 cm	
<b>Lunghezza dei rotoli / Rolls length</b>		
Formato standard / Standard format length	50 ml / 50lm	
<b>Proprietà fisiche / Physical properties</b>		
Resistenza alla rottura (ordito/trama) / Tensile strength (ward/welft)	230/220 daN/5 cm	EN ISO 1421
Resistenza allo strappo (ordito/trama) / Tear resistance (ward/welft)	20/20 daN	DIN 53363
Trattamento fungistatico / Fungistatic treatment	Grado 0, eccellente / Degree 0, excellent	EN ISO 846°
<b>Reazione al fuoco / Flame retardancy</b>		
Classe / Rating	CL.2 secondo le norme italiane RF 1/75 e 3/77 • M2/BS 7837 NFP 92-507 • B1 DIN 4102- 1 • M2/UNE 23.727-90	



**XTESA**  
**G**ENNIUS

**PRECONTRAI**  
**302**

**SOLTIS**  
W96

ENJOY  
THE  
OUT  
DOOR  
**KE**  
PROTEZIONI SOLARI



Grigio

358



Bianco

8100



Beige

861



Ghiaccio

1118



Marrone

1115



Grigio

390



Argento

400

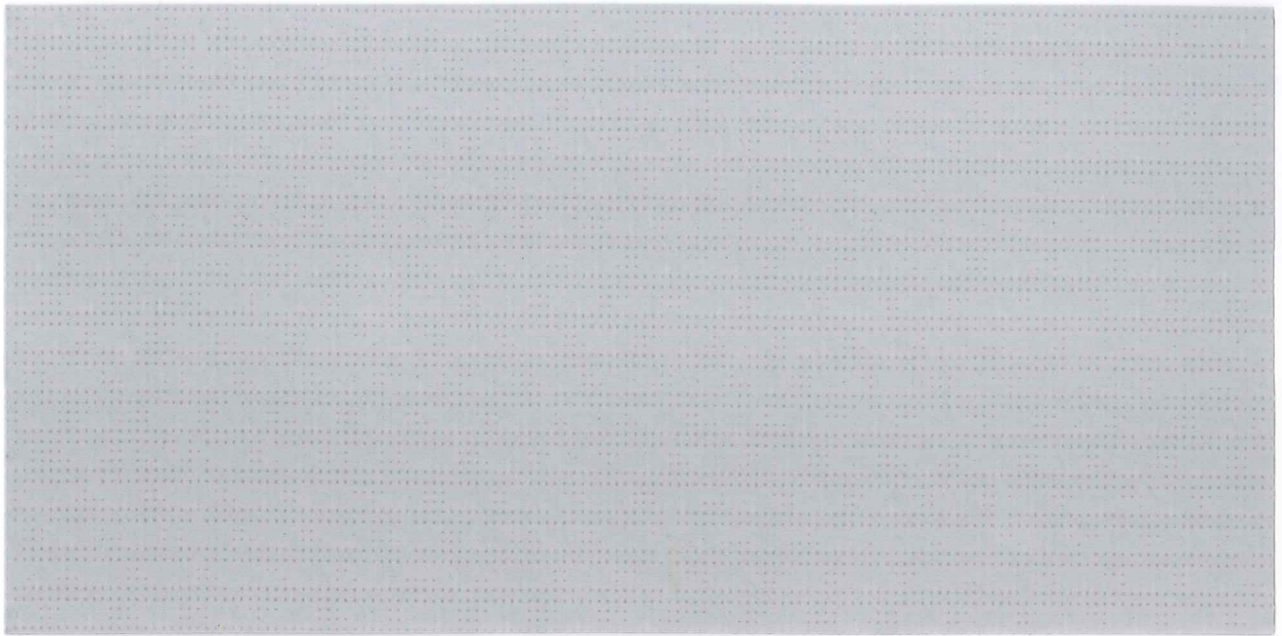


Bianco perla

1498

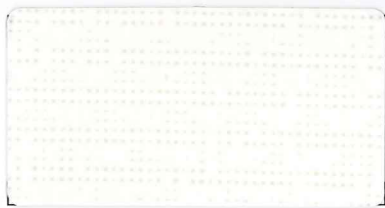
# GENNIUS

SOLTIS  
W96



Cenere

W96-2171



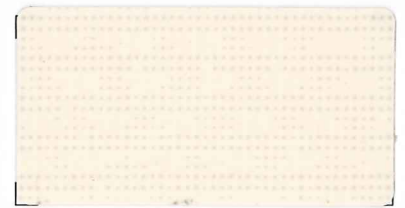
Bianco

W96-8102



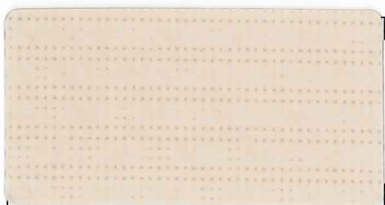
Grigio

W96-2047



Ecrù

W96-1103



Sabbia

W96-8861

## PRECONTRAIPT 302

Proprietà tecniche / Technical properties	Preconstraint 302	Nome
Peso / Weight	480 g/m <sup>2</sup>	EN ISO 2286-2
Altezza / Width	180 cm	

Proprietà fisiche / Physical properties		
Resistenza alla rottura (ordito/trama) / Tensile strength (ward/welft)	140/150 daN/5 cm	EN ISO 1421
Resistenza allo strappo (ordito/trama) / Tear resistance (ward/welft)	10/12 daN	DIN 53.363

Classe / Rating	CL.2 secondo le norme italiane RF 1/75 e 3/77 • M2/NFP 92-503 • B1 DIN 4102- 1 • M2/NFP 92.503	
-----------------	--	--

## SOLTIS W96

Proprietà tecniche / Technical properties	Soltis W96	Nome
Peso / Weight	620 g/m <sup>2</sup>	EN ISO 2286-2
Spessore / Thickness	0.56 mm	
Altezza / Width	267 cm	

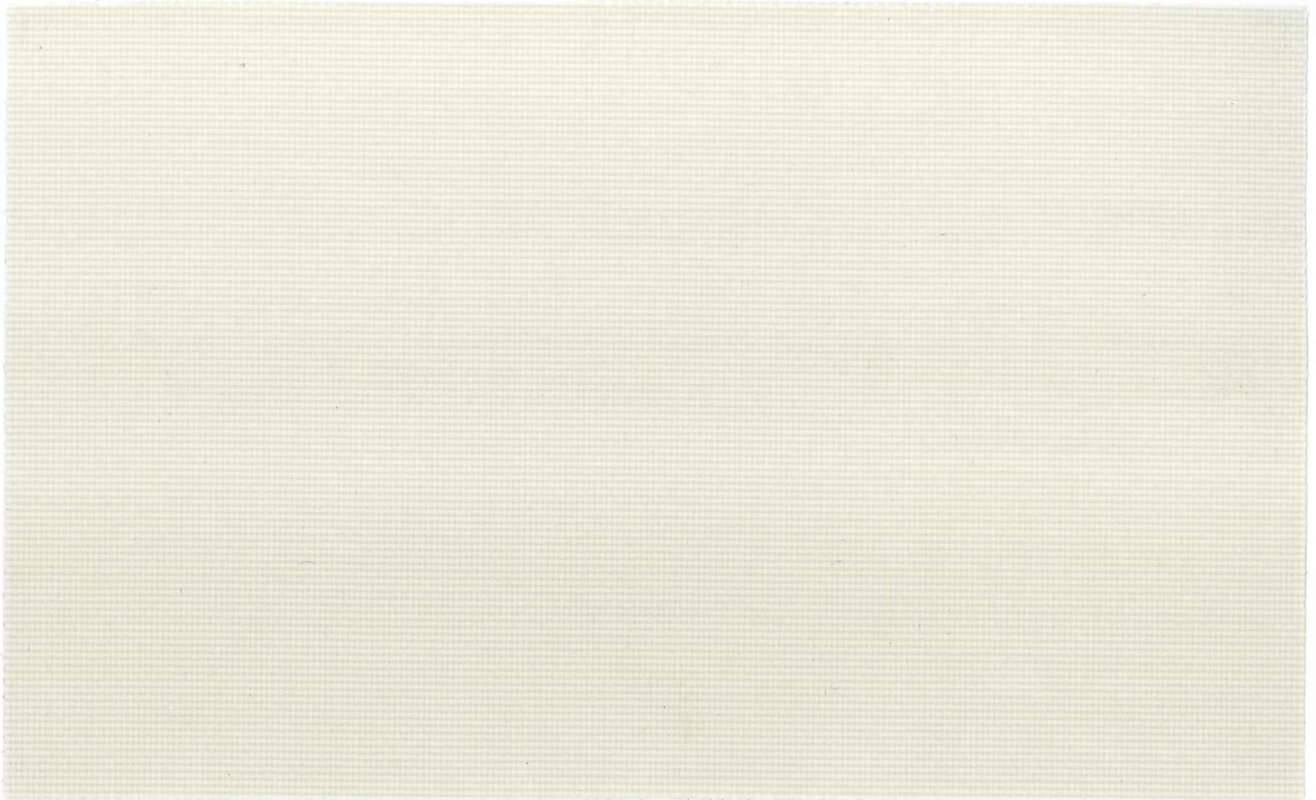
Lunghezza dei rotoli / Rolls length		
Formato standard in altezza 177 cm / Roll width	35 ml / 35lm	

Proprietà fisiche / Physical properties		
Resistenza alla rottura (ordito/trama) / Tensile strength (ward/welft)	220/220 daN/5 cm	EN ISO 1421
Resistenza allo strappo (ordito/trama) / Tear resistance (ward/welft)	25/20 daN	DIN 53.363

Reazione al fuoco / Flame retardancy		
Classe / Rating	M2	NFP 92-507

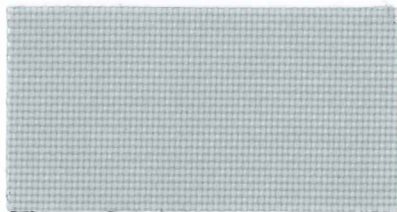
# GENNIUS XTESA

POLIESTERE RESINATO IMPERMEABILE  
POLYESTER RESINAT WATERPROOF



Beige

60100/10151



Grigio chiaro

60100/10098



Sabbia

60100/10099



Grigio scuro

60100/10152



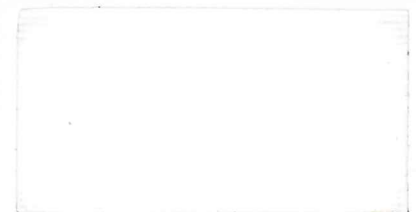
Bordeaux

60100/10310



Marrone

60100/10307



Bianco

60100/10097

# XTESA

Proprietà tecniche / Technical properties	Poliestere resinato/Polyester reninate	Nome
Peso / Weight	120 g/m <sup>2</sup>	DIN EN 12127
Spessore / Thickness	0,39 mm	DIN EN ISO 5084
Altezza / Width	120 cm	DIN EN 1773
Proprietà fisiche / Physical properties		
Resistenza alla rottura (ordito/trama) / Tensile strength (ward/welft)	4000/3500 daN/5 cm	DIN EN 13934-1
Resistenza allo strappo (ordito/trama) / Tear resistance (ward/welft)	400/400 daN	DIN EN 13937-2
Idrorepellenza / Water repellency	90	DIN EN 24920
Colonna d'acqua/Water column		
Resistenze / fastness		
Resistenza alla luce / Light fastness	7	DIN EN ISO 105-B02
Resistenza alla sfregatura / Rubbing fastness	5/5	DIN EN ISO 105-X12

EASY SAILS

**G**ENNIUS

SUNBRELLA

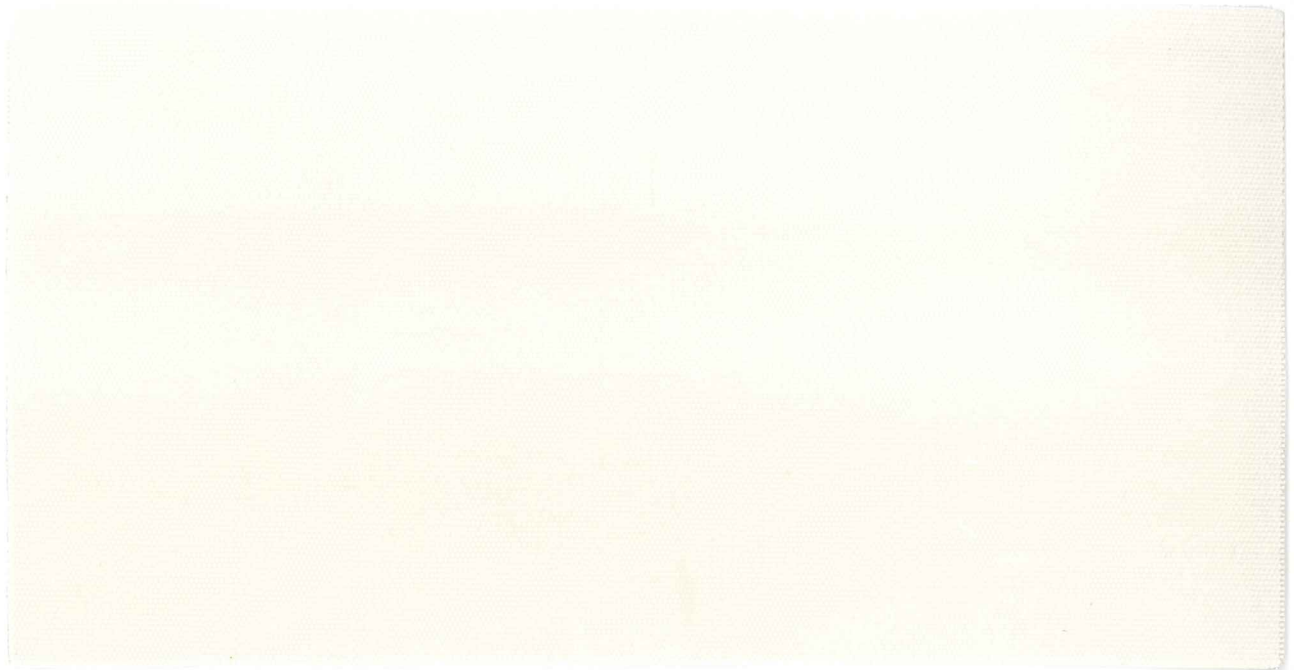
TEXTILENE

TENTMESH

ENJOY  
THE  
OUT  
DOOR  
**KE**  
PROTEZIONI SOLARI

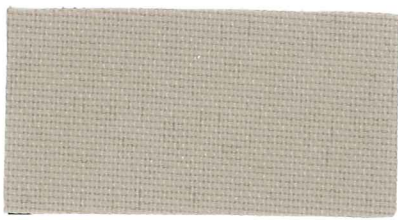
# GENNIUS

## SUNBRELLA



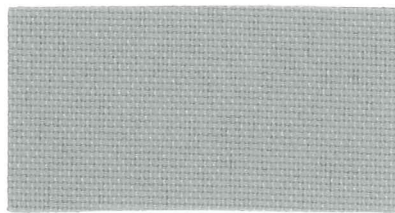
Avorio \*

TA



Sabbia \* \*

TS



Grigio \* \*

TE

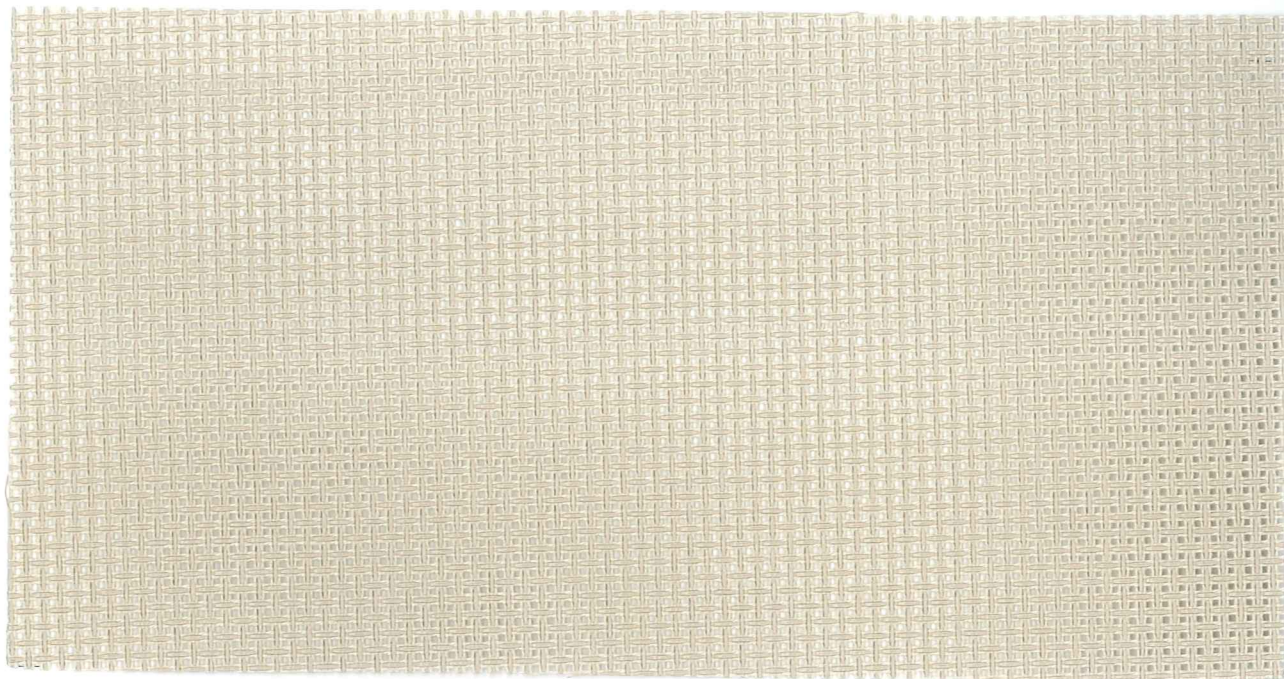
\* Idrorepellente/water-repellent

\* \* Impermeabile/waterproof



# GENNIUS

## TEXTILENE



Sabbia

TS



Avorio

TA

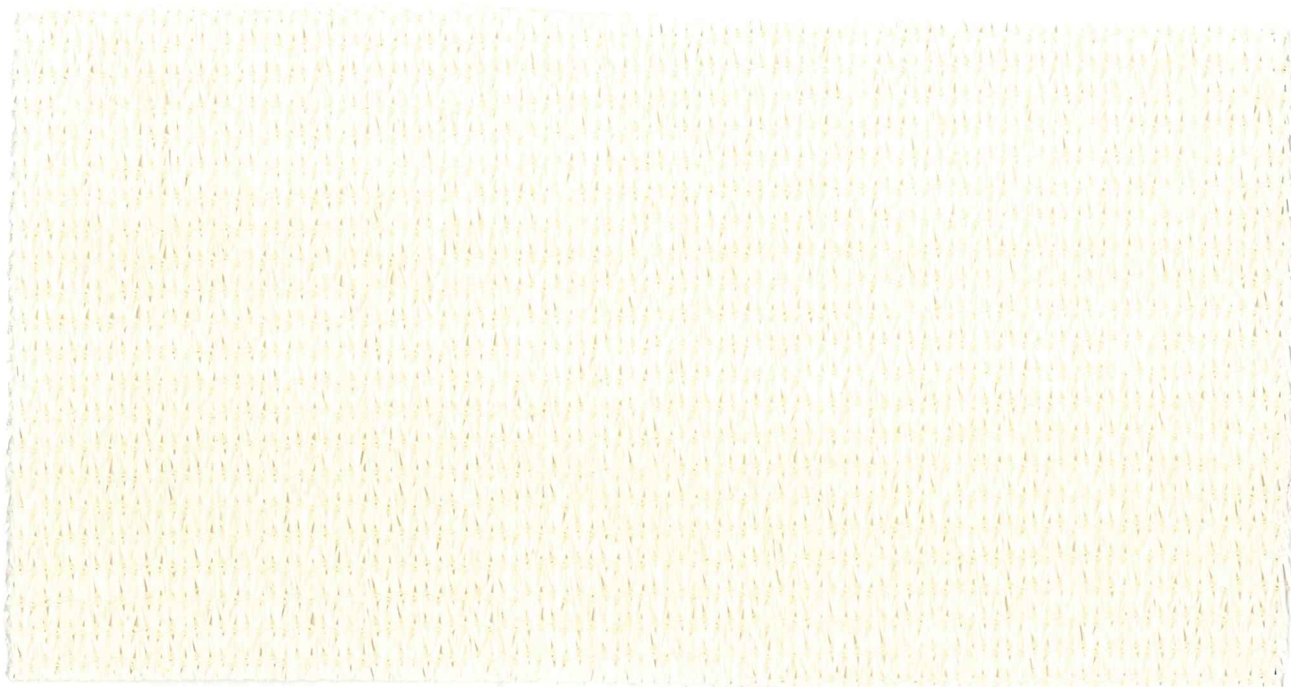


Grigio

TE

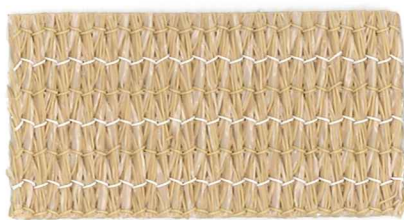
# GENNIUS

## TENTMESH



Avorio

TA



Sabbia

TS

• Easysails è disponibile anche con il tessuto Dacron che trovate all'interno della scheda Genius Sails.  
Easysails is also available with the Dacron fabric that you find on the ad Genius Sails.

## SUNBRELLA

Proprietà tecniche / Technical properties	Sumbrella	Nome
Peso / Weight	240 g/m <sup>2</sup>	ISO 3801
Altezza / Width	152.5 cm	
<b>Lunghezza dei rotoli / Rolls length</b>		
Formato standard / Roll width	90 ml / 90lm	
<b>Proprietà fisiche / Physical properties</b>		
Resistenza alla rottura (ordito/trama) / Tensile strength (ward/welft)	217/152 daN	ISO 13934-1
Resistenza allo strappo (ordito/trama) / Tear resistance (ward/welft)	9.9/8.7 daN	ISO 13937-1

## TEXTILENE

Proprietà tecniche / Technical properties	Textilene	Nome
Peso / Weight	275 g/m <sup>2</sup>	ISO 2286-2
Spessore / Thickness	0.74 mm	ISO 2286-3
Altezza / Width	125/250 cm	EN 1773
<b>Lunghezza dei rotoli / Rolls length</b>		
Formato standard / Roll width	50 ml / 50lm	
<b>Proprietà fisiche / Physical properties</b>		
Resistenza alla rottura (ordito/trama) / Tensile strength (ward/welft)	80/80 daN	ISO 13934-1
Resistenza allo strappo (ordito/trama) / Tear resistance (ward/welft)	6.5/5 daN	ISO 13937-1

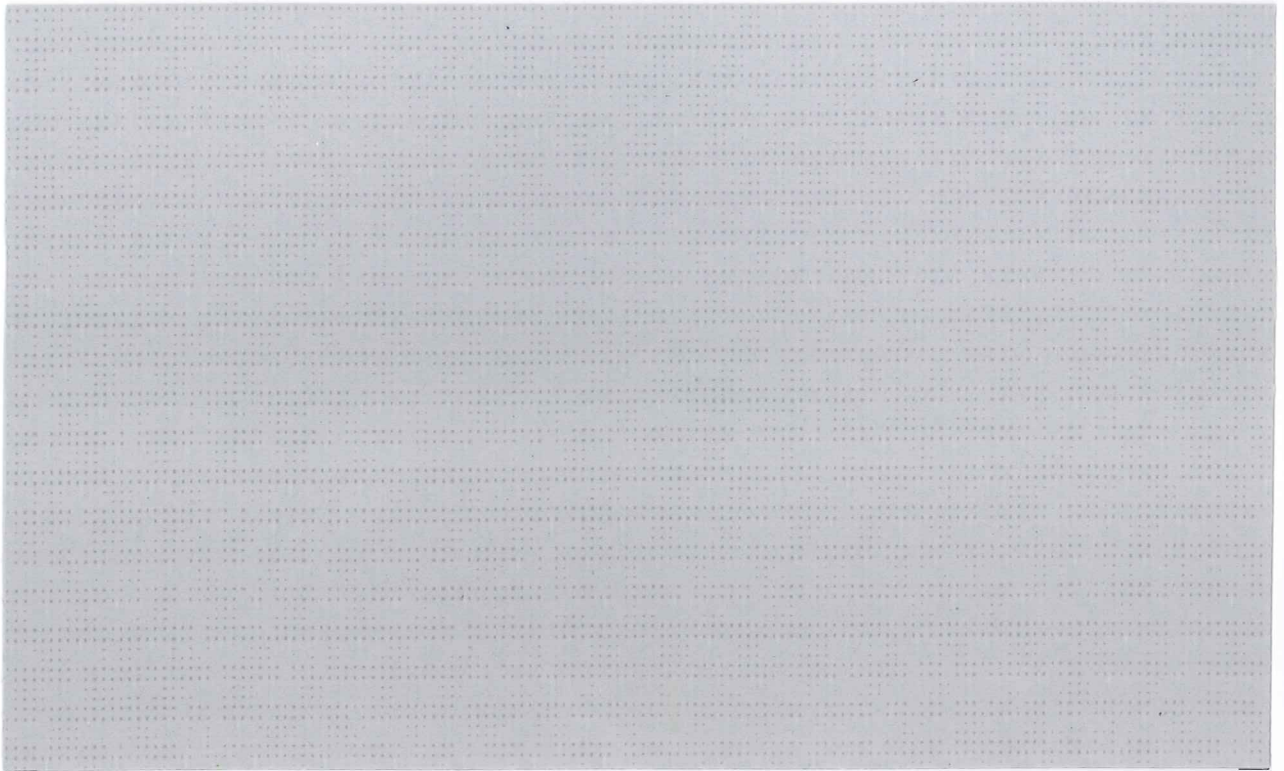
## TENTMESH

Proprietà tecniche / Technical properties	Tentmesh	Nome
Peso / Weight	340 g/m <sup>2</sup>	EN 1849/2
Spessore / Thickness	1.6 mm	
Altezza / Width	300 cm	
<b>Lunghezza dei rotoli / Rolls length</b>		
Formato standard / Roll width	40 ml / 40lm	
<b>Proprietà fisiche / Physical properties</b>		
Resistenza alla rottura (ordito/trama) / Tensile strength (ward/welft)	63/250 daN/5cm	ISO 13934-1
Resistenza allo strappo (ordito/trama) / Tear resistance (ward/welft)	19/36 daN	DIN 53363

**S**CREENY

# SCREENY

Serge Ferrari  
SOLTIS  
W96



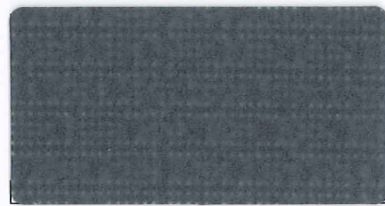
Cenere

W96-2171



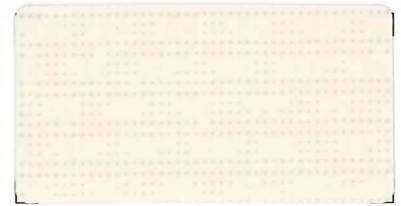
Bianco

W96-8102



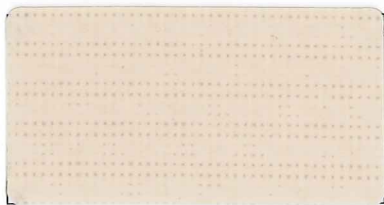
Grigio

W96-2047



Ecrù

W96-1103



Sabbia

W96-8861

Proprietà tecniche / Technical properties	Soltis W96	Nome
Peso / Weight	620 g/m <sup>2</sup>	EN ISO 2286-2
Spessore / Thickness	0.56 mm	
Altezza / Width	267 cm	
Lunghezza dei rotoli / Rolls length		
Formato standard in altezza 177 cm / Roll width	35 ml / 35lm	
Proprietà fisiche / Physical properties		
Resistenza alla rottura (ordito/trama) / Tensile strength (ward/welft)	220/220 daN/5 cm	EN ISO 1421
Resistenza allo strappo (ordito/trama) / Tear resistance (ward/welft)	25/20 daN	DIN 53.363
Reazione al fuoco / Flame retardancy		
Classe / Rating	M2	NFP 92-507

# SCREENY

**PRECONTRAIN**

**602**

**Serge Ferrari** 

ENJOY  
THE  
OUT  
DOOR  
**KE**

PROTEZIONI SOLARI

**SCREENY**

*PRECONTRAIT*

**602**



Bianco

602-8100



Avorio

602-8341L



# SCREENY

PRECONTRAIT

## 602

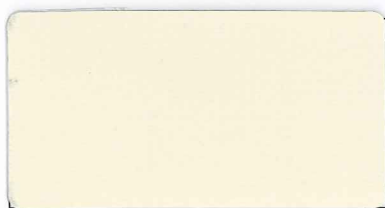
OSCURANTE OPACO

BLACKOUT MATTE



Bianco

602-50537



Avorio

602-50539



Grigio

602-50542

OPTIONAL

**PRECONSTRAINT**  
**602**

Proprietà tecniche / Technical properties	Preconstraint 602	Nome
Peso / Weight	650 g/m <sup>2</sup>	EN ISO 2286-2
Altezza / Width	267 cm	

Proprietà fisiche / Physical properties		
Resistenza alla rottura (ordito/trama) / Tensile strength (ward/welft)	250/250 daN/5 cm	EN ISO 1421
Resistenza allo strappo (ordito/trama) / Tear resistance (ward/welft)	20/20 daN	DIN 53.363

Classe / Rating	M2/NFP 90-507 • B1/DIN 4102- 1 • M2/UNE 23.727-90 • BS 7837 • Q1-Tr1/ONORM A 3800-1 • 1530.2et3/AS/NZS
-----------------	--

**PRECONSTRAINT**  
**602** OSCURANTE OPACO  
BLACKOUT MATTE

Proprietà tecniche / Technical properties	Preconstraint 602 Blockout matte	Nome
Peso / Weight	750 g/m <sup>2</sup>	EN ISO 2286-2
Spessore / Thickness	0.62 mm	
Altezza / Width	250 cm	

Lunghezza dei rotoli / Rolls length		
Formato standard / Standard format length	50 ml / 50lm	

Proprietà fisiche / Physical properties		
Resistenza alla rottura (ordito/trama) / Tensile strength (ward/welft)	230/220 daN/5 cm	EN ISO 1421
Resistenza allo strappo (ordito/trama) / Tear resistance (ward/welft)	20/20 daN	DIN 53363
Trattamento fungistatico / Fungistatic treatment	Grado 0, eccellente / Degree 0, excellent	EN ISO 846°

Reazione al fuoco / Flame retardancy		
Classe / Rating	CL.2 secondo le norme italiane RF 1/75 e 3/77 • M2/BS 7837 • NFP 92-507 • B1 DIN 4102- 1 • M2/UNE 23.727-90	